

THE SECRET LIFE OF IMMUNE CELLS



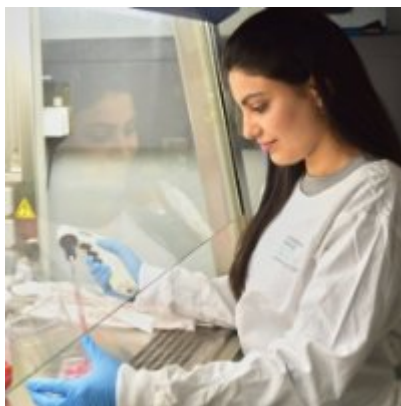
Rohit Jain, PhD

Research Officer, Immune Imaging Program, Centenary Institute

Honorary Associate, Sydney Medical School, University of Sydney

Dr Jain obtained his PhD from the National Institute of Immunology, New Delhi in 2009 where he studied the role of the Leishmania cell surface protein Prohibitin in promoting macrophage infection. Since joining Immune Imaging Program at the Centenary Institute, he has utilised state of the art intravital multiphoton microscopy to investigate the role of innate immune cells during microbial pathogenesis, visualise T cell migration in inflamed tissues and provide new insights into the role of macrophages in leukocyte homing. His publications include Nature Immunology, Nature Reviews Immunology, Nature Protocols, Nature Communications, PloS Pathogen, Science Translational Medicine and Immunity. His present work focusses on understanding leukocyte dynamics during parasitic infections and tumour development.

MACROPHAGES IN TUMOUR MICROENVIRONMENT



Shweta Tikoo, PhD

Postdoctoral Fellow, Centenary Institute, Sydney

Dr. Tikoo obtained her PhD from the National Institute of Immunology, New Delhi in 2013 where she studied the role of DNA damage pathways in cancer with particular emphasis on the role of post translational pathways in DDR (DNA damage and repair). She commenced her post-doctoral studies with Prof Wolfgang Weninger at Centenary Institute Sydney in 2013. Completely switching gears, she started studying the role of immune cells, in particular perivascular macrophages in tumour development and metastasis. She is currently pursuing the development of this unique subset of macrophages in inflammation and cancer.

WEDNESDAY 13th September 2017, 1 – 2 PM
Auditorium, Research & Education Centre
St George Hospital, Ground floor, 4 – 10 south St, Kogarah

Light refreshments will be provided

Please register at www.stgcs.med.unsw.edu.au/ripm

Research in Progress Meeting Committee

Dr Fatima El-Assaad
f.el-assaad@unsw.edu.au

Dr Meera Esvaran
m.esvaran@unsw.edu.au

Dr Freda Passam
f.passam@unsw.edu.au

Dr Howard Yim
c.yim@unsw.edu.au